

# INTEGRAL COLOR CHART



## SURECRETE



Caramel Buff Light 1 Bag / 2 Yards



Caramel Buff Medium 1 Bag / 1 Yard



Caramel Buff Dark 2 Bags / 1 Yard



Chestnut Light 1 Bag / 2 Yards



Chestnut Medium 1 Bag / 1 Yard



Chestnut Dark 2 Bags / 1 Yard



Watermelon Light 1 Bag / 2 Yards



Watermelon Medium 1 Bag / 1 Yard



Watermelon Dark 2 Bags / 1 Yard



Chocolate Light 1 Bag / 2 Yards



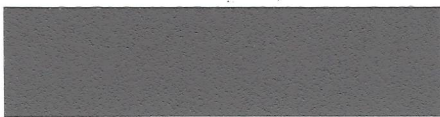
Chocolate Medium 1 Bag / 1 Yard



Chocolate Dark 2 Bags / 1 Yard



Gun Metal Light 1 Bag / 2 Yards

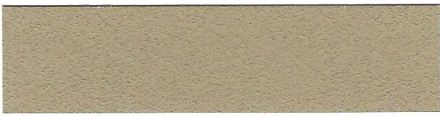


Gun Metal Medium 1 Bag / 1 Yard

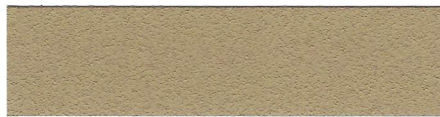


Gun Metal Dark 2 Bags / 1 Yard

## SOLOMON



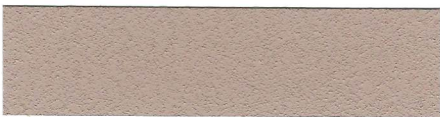
288 Rosemary



288 Ginger (SRI 41)



288 Straw (SRI 48)



750 Desert Tan (SRI 45)



238 Thyme (SRI 44)



306 Canvas (SRI 37)



242 Sandstone (SRI 36)



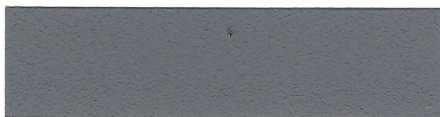
242 Sahara (SRI 46)



242 Nutmeg



920 Slate (SRI 22)



920 Smoke



920 Onyx

NOTE: THE COLOR OF RAW MATERIALS, OR A SIMPLE STRIP, IS SUBJECT TO VARIATION FROM THE COLOR CHIP REPRODUCED ABOVE. COLORS ABOVE ARE AS ACCURATE AS CAN BE PRODUCED USING FINEST MATERIALS OF REPRODUCTION. JOB SITE VARIATIONS FROM THE ABOVE COLOR MAY OCCUR DUE TO DIFFERENCES IN LOCAL RAW MATERIALS AND METHODS OF APPLICATION BEFORE FINAL COLOR SELECTION IS MADE. A JOB SITE PANEL SHOULD BE ERECTED AND APPROVED.